



Tiger AI

The world's most profitable tiger

Tiger AI Fund Introduction

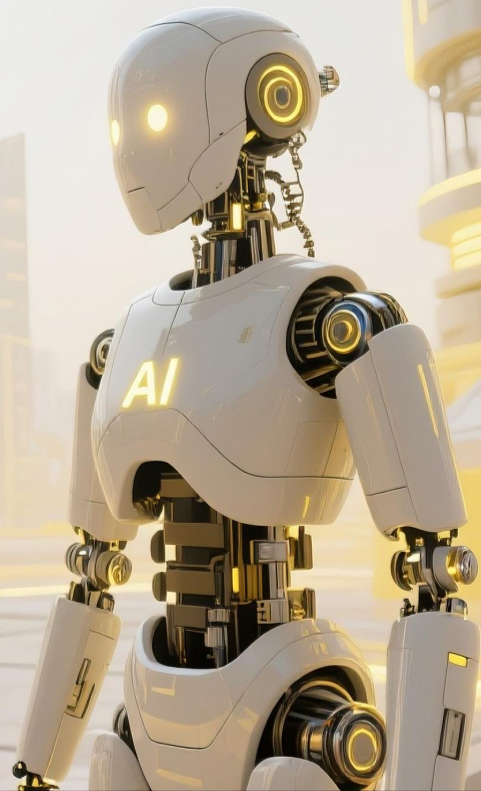
The world's first institution level quantitative capability AI The intelligent fund body originates from the system evolution of Tiger Fund and opens up AI New Era of Asset Management

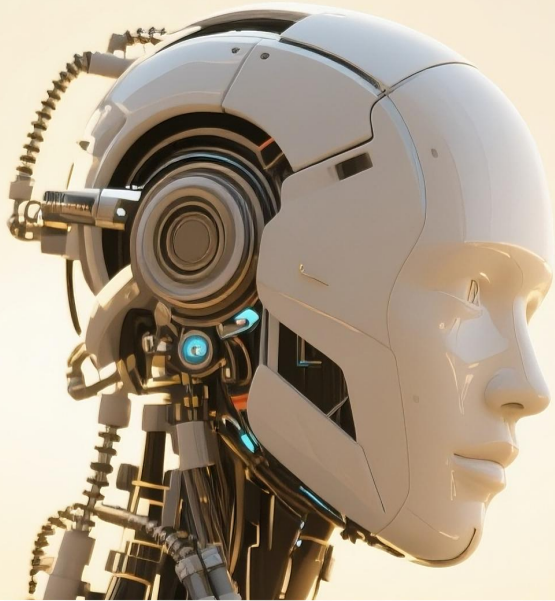
The rules of the financial game

Quietly rewriting

The era of human decision-making is fading away.

AI Finance has become the starting point of a new global order.





AI finance isn't an option; it's the only way forward.

Three major trends are
unfolding simultaneously:

1 Capital management is shifting from "human-controlled" to "model-driven".

Over 50% of hedge funds globally have already deployed AI models, and traditional investment research has lost its absolute edge.

2 The financial system is evolving from "closed" to "intelligent and autonomous".

From asset allocation to risk control, automated, self-learning systems are replacing offline manual processes.

3 The investment logic of institutions is transforming from "experience-based trading" to "agent collaboration".

AI is no longer just a tool; it's a strategic partner and the dominant decision-maker in asset systems.



Project Overview



Tiger AI Fund Introduction

Positioning: The world's first AI-powered intelligent fund entity with institutional-grade quantitative capabilities. Evolving from the Tiger Fund's system, it ushers in a new era of AI asset management.

Tiger AI is a next-generation intelligent asset system driven by artificial intelligence. It inherits the core strategic DNA of Tiger Global in the global capital markets while achieving a generational leap: evolving from the traditional "human-driven" investment paradigm to a "model-driven" intelligent asset entity.

Within Tiger AI, decision-making is no longer reliant on subjective judgments. Instead, AI algorithms take the lead, enabling full-process automation of strategy generation, asset allocation, and risk control. The system possesses continuous learning and self-optimization capabilities, truly achieving 24/7, emotion-free, and zero-delay asset management.

This represents a fundamental shift from "human traders" to "intelligent agents" – making the investment system no longer dependent on experience and intuition but rather on algorithms and data. Tiger AI symbolizes the rise of AI sovereign asset management and heralds the next era of Wall Street.

Tiger AI

Mission

Reconstruct the core logic of asset management, enabling every unit of capital to achieve optimal allocation and intelligent growth under AI-driven processes.

Vision

Become the world's most trusted AI sovereign asset system, propelling the evolution of traditional finance towards "intelligent autonomous finance."

Strategic Goals

Within three years, establish a globally leading intelligent asset management infrastructure to serve 6 million ordinary users worldwide.

Within three years, establish a globally leading intelligent asset management infrastructure to serve 6 million ordinary users worldwide.

Become the "Benchmark System" in the AI asset management field — providing the foundation for future AI funds.

Core Values

**Intelligent
Autonomy**

**Professional
Discipline**

**Transparency
Verifiability**

**Long-
termism**

**Institutional-
Grade Caliber**

**Systemic
Trustworthine**





Founding Background

Brand trust source

Founding Background

From Wall Street to a New Era of AI-Driven Asset Management

Tiger AI was born out of a profound reflection on the traditional logic of asset management: today's financial system relies heavily on experience, emotions, and human decision-making, resulting in inefficiencies, lack of transparency, and difficulties in achieving sustainable optimization.

In 2023, a group of core investment research and technology leaders from top-tier institutions such as Tiger Global, Goldman Sachs, Two Sigma, and Bridgewater, joined forces with AI scientists and systems engineers from prestigious universities including Stanford, MIT, and Columbia University to establish Tiger AI.

Their goal is clear: to reconstruct the capital management system, empowering AI to become the new generation of "fund managers." By leveraging algorithms to replace human biases, they aim to make investment decisions more efficient, precise, and sustainable.

TIGERGLOBAL

**Goldman
Sachs**



**TWO SIGMA
VENTURES**



BRIDGEWATER



Tiger AI
The world's most profitable tiger

Core Team Composition

Daniel Myers **CSO**

Formerly a Senior Investment Analyst at Tiger Global, where he spearheaded multiple mergers and acquisitions projects in the technology sector. Holds a Master's degree in Economics from Columbia University and excels in constructing macroeconomic frameworks and quantitative strategy architectures.

Elizabeth Morgan **CMO**

Formerly the Head of Institutional Business Development at Bridgewater Associates, with expertise in institutional client operations and fund product structure design. Holds an MBA from Columbia University and possesses experience in SEC fund compliance.

Michael Grant **Chief AI Architect**

Previously the Head of Model Development at Two Sigma. Holds a Ph.D. in Computer Science from MIT, specializing in reinforcement learning and multi-factor modeling.

Matthew Collins **COO**

Formerly the Head of Global Market Operations at Goldman Sachs, responsible for optimizing trading system processes and ensuring cross-border risk control and compliance execution.



Tiger AI
The world's most profitable tiger

The Lineage of Tiger AI: Rooted in Tiger Global's Value-Hunting DNA

Tiger Global, founded by the original Tiger Management team led by Julian Robertson, once managed over \$100 billion in assets and is renowned for its value discovery, cross-cycle positioning, and global macro perspective.

It emphasizes:

Long-termism and fundamental insights ;

Proactive positioning for macro trends ;

Robust execution and stringent position governance.



TIGERGLOBAL



Tiger AI
The world's most profitable tiger

Founding Intent: **A "Financial Rewrite" from Within the System**

"We're not here to wrap outdated financial models in AI's guise. Instead, we're rewriting the very fabric of asset management systems from the ground up."

— Joint Declaration by Tiger AI's Founding Team

The establishment of Tiger AI is no ordinary startup venture; it's an ambitious endeavor by seasoned Wall Street practitioners and AI technologists to reconstruct the logic of capital operations. As the old order gradually loses its efficacy, they've chosen to usher in a new era of finance—one marked by greater efficiency, transparency, and trustworthiness—through code, models, and systemic intelligence.



Product Structure of Tiger AI



Tiger AI
The world's most profitable tiger

Core System Modules

Strategy Engine

Generates real-time multi-factor quantitative strategy portfolios based on nine AI models (e.g., trend identification, mean reversion, arbitrage structures, macroeconomic drivers). Automatically adjusts weights and trading directions.

Execution Engine

Automatically converts strategy instructions into trading actions, connects to trading interfaces, and achieves millisecond-level order placement, dynamic slippage control, and cost optimization.

Self-Learning Core

Conducts retrospective analysis of historical and real-time trading performance through a reinforcement learning mechanism, continuously optimizing strategy structures and market adaptability.



Data Intelligence Layer

Integrates global market data (including prices, news, macroeconomic indicators, on-chain data, etc.), conducts real-time processing, cleansing, and modeling to support millisecond-level responsiveness.

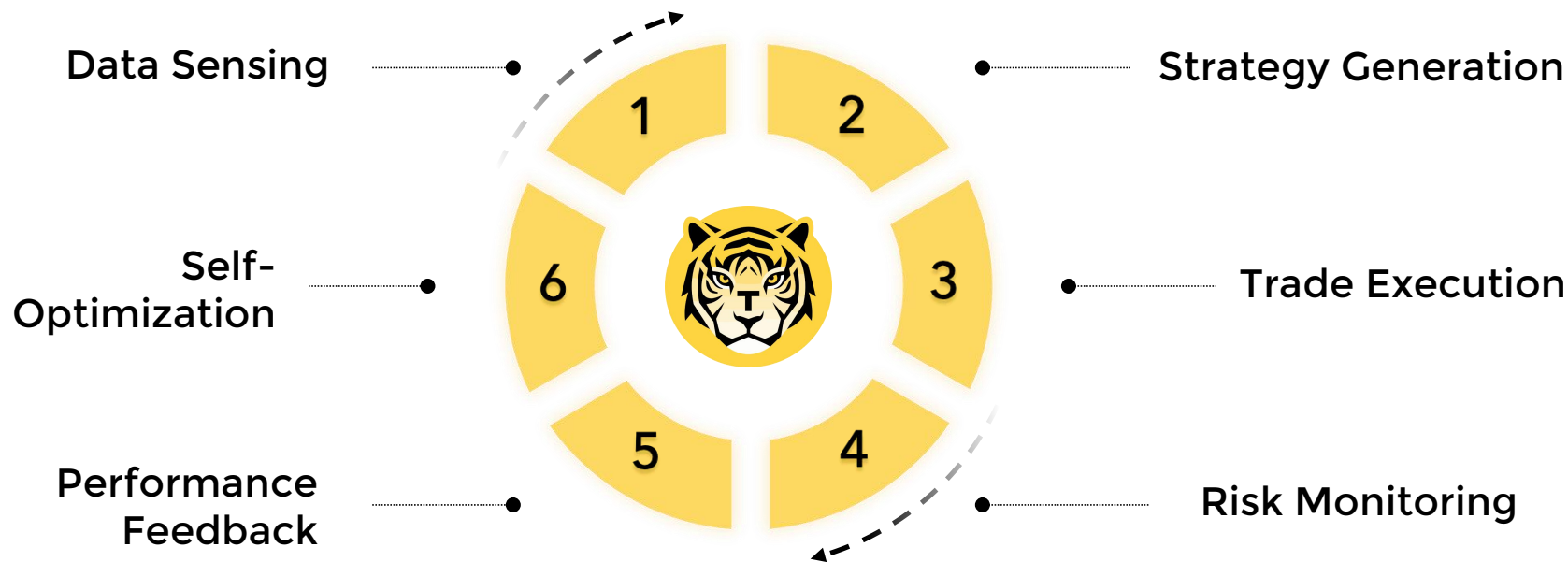
AI Risk Controller

Sets multi-dimensional risk control thresholds, monitors risk exposures, leverage ratios, and drawdown magnitudes in real-time, and automatically intervenes or adjusts strategy parameters.

Tiger AI System Closed-Loop Flowchart



The entire process is AI-driven, characterized by three core attributes: human-free intervention, autonomous operation, and continuous evolution, enabling intelligent asset management capabilities across all markets, cycles, and time zones.



Tiger AI's Approach to Reconstruction: From "Fund Managers" to "Intelligent Systems"

Tiger AI no longer relies on manual market timing and intuitive trading decisions. Instead, it places AI at the core of its operations, reshaping the logic of asset management through the following three major systems:



1. TigerMind™ Strategy Brain

Integrates machine learning, on-chain data mining, and quantitative factor evolution to automatically generate investment models that adapt to market rhythms.



2. TigerOps™ Execution Network

Connects to APIs of multiple exchanges and data/trading platforms, supporting millisecond-level responsiveness, real-time portfolio rebalancing, and diversified strategy deployment.



3. TigerSense™ Market Sensor

Analyzes global public sentiment, on-chain capital flows, and trading emotions in real-time, cultivating an AI-powered "sixth sense" for the market.
This setup enables 24/7 operation with zero human intervention, forming a millisecond-level decision-making and closed-loop system.

From 'Fund Manager' to 'Intelligent System'



Tiger AI
The world's most profitable tiger

```
ai-hedge-fund/
├─ src/
│   ├── agents/                # Agent definitions and workflow
│   │   ├── bill_ackman.py      # Bill Ackman agent
│   │   ├── fundamentals.py     # Fundamental analysis agent
│   │   ├── portfolio_manager.py # Portfolio management agent
│   │   ├── risk_manager.py     # Risk management agent
│   │   ├── sentiment.py        # Sentiment analysis agent
│   │   ├── technicals.py       # Technical analysis agent
│   │   ├── valuation.py        # Valuation analysis agent
│   │   ├── ...                # Other agents
│   │   ├── warren_buffett.py   # Warren Buffett agent
│   │   ├── aswath_damodaran.py # Aswath Damodaran agent
│   │   ├── ...                # Other agents
│   │   └── ...                # Other agents
│   ├── tools/                 # Agent tools
│   │   └── api.py              # API tools
│   ├── backtester.py          # Backtesting tools
│   └── main.py                 # Main entry point
├─ pyproject.toml
└─ ...
```



Strategy Output:

Date	Ticker	Action	Quantity	Price	Cash	Stock	Total Value	Bullish	Bearish	Neutral
2024-12-10	AAPL	hold	0	148.5	100000	0	100000	1	2	1
2024-12-13	AAPL	hold	0	150.47	100000	0	100000	1	2	1
2024-12-14	AAPL	buy	655	152.59	53.55	655	100000	2	1	1
2024-12-15	AAPL	hold	0	152.99	53.55	655	100262	2	1	1
2024-12-16	AAPL	hold	0	155.85	53.55	655	102135	2	1	1
2024-12-17	AAPL	hold	0	155	53.55	655	101579	2	1	1
2024-12-20	AAPL	hold	0	157.4	53.55	655	103151	2	1	1
2024-12-21	AAPL	hold	0	159.28	53.55	655	104382	2	1	1
2024-12-22	AAPL	hold	0	157.83	53.55	655	103432	2	1	1
2024-12-23	AAPL	hold	0	158.93	53.55	655	104153	2	1	1
2024-12-24	AAPL	hold	0	160.25	53.55	655	105017	3	1	0

Product Structure of Tiger AI:

Cyclical Funds + Tokenized Funds

TQF-1 | Intelligent Cyclical Fund

Supported Cycles: 7-day / 90-day / 180-day / 270-day investment periods

Daily Yield Distribution (1.0%-2.0%)

AI-Driven Execution: All strategies are automatically executed by AI models with compound interest optimization

cycle	Daily rate of return	Income structure
7day	1.0%	45% user bonus/ 50% team/ 5% platform
90day	1.3%	ditto
180day	1.6%	ditto
270day	2.0%	ditto



Tiger AI
The world's most profitable tiger

The product structure of Tiger AI

Periodic Fund+Token Fund

TQF-2 | Tokenized Equity Fund

Investors receive Tiger Tokens (TAC) upon participation

Bound to governance rights within the Tiger AI ecosystem, platform profit-sharing, and staking rewards

Builds a long-term compound interest consensus mechanism for Tiger AI

Come in and go out at any time

Portfolio investment currency: 80% USDT+20%USDY

Daily profit of 1% (value) TAC(Tiger AI Coin))

Come in and go out at any time Tiger AI-2 Output of Fund TQF-2 TAC(Tiger AI Coin), **TAC Daily increase of 0.4%, annualized 4 times.**

Income distribution:

5% platform management fee; 45% personal investment dividends; 50%TAC Market value management.

The Essential Differences Between Tiger AI and Traditional Quantitative Approaches



		Tiger AI		Traditional Quant Strategy Platforms	
Aspect	Traditional Funds				
Decision-Making	Manual decision-making, low-frequency response	AI-model-driven, autonomous		Rule-based by human design	
Strategy Updates	None	Real-time self-learning		Static, requires manual adjustments	
Execution Logic	Manual order placement	Automated order placement with intelligent slippage control		Semi-automated, requires monitoring	
Risk Management	Relies on discretionary judgment	Embedded AI risk control with real-time tuning		External risk control or manual oversight	
System Architecture	Platform-dependent	Fully closed-loop asset system		Point-solution strategy toolkit	

How Can Users Participate?

Tiger AI is no longer an exclusive privilege for "professional investors" but an open AI-powered asset management system. Here's how users can engage:

- Users can choose to invest for specified cycles or hold tokens;
- All earnings are released daily, with transparent system tracking available ;
- Users can earn higher returns and platform dividend rights by participating in staking, referrals, and node development ;
- VIP levels (TP1-TP9) are automatically upgraded, supporting global network fission and expansion.



Business Model

From Intelligent Asset Ecosystem to Profit Engine:

Tiger AI's Commercial Monetization Pathway

Tiger AI transcends being merely a fund product; it is a scalable, licensable, and deployable intelligent asset system platform.

Its business model integrates a triple-layered structure comprising proprietary fund profitability, technology licensing, and intelligent strategy services, forming a robust and scalable revenue engine.



Fund Profitability Pathways



Proprietary AI Fund

- Tiger AI operates its own proprietary master fund, fully integrated into the platform's comprehensive system
- Capital Sources: High-net-worth individuals, family offices, funds of funds (FOFs), and hedge funds.
- Fee Structure: 2% management fee + 20% performance fee (with customizable hurdle rates)
- Key Features: Fully automated operations, with investors having visibility into strategy performance and execution trajectories.

Strategy-as-a-Service

- Offers white-label strategy APIs to trading platforms, digital asset management firms, Web3 protocols, etc.
- Provides intelligent strategy interfaces tailored to specific markets, asset classes, and risk preferences.
- Pricing Models: Monthly subscriptions, transaction-based fees, or profit-sharing arrangements.
- Key Features: Highly composable, seamlessly integrable into other systems.

Technology Licensing

- Provides small to medium-sized funds and quantitative trading teams with full-system modules from Tiger AI.
- Licensable Components: Includes the strategy engine, risk management module, execution interface, etc.
- Pricing Models: Charges licensing fees based on account/asset size or revenue-sharing arrangements.
- Key Features: Asset-light deployment, rapid scalability, and platform-like attributes.

Token-Based Incentive System



Global Strategic Layout

Building a Global Multipolar Intelligent Asset Network

Tiger AI is not merely an investment system—it is destined to become the "intelligent hub node" within the future global asset circulation ecosystem.

We adopt a trinity-based layout of "U.S. East Coast Headquarters + Asia-Pacific Gateway + Middle Eastern Funding Channel," progressively establishing a service framework tailored to global high-net-worth clients and institutional investors.



Core Regional Layout

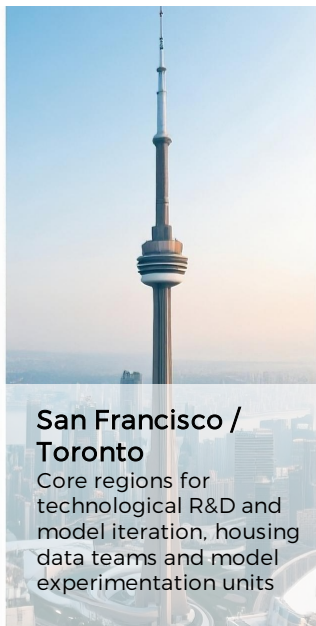


TigerAI
The world's most profitable tiger



New York (Headquarters)

Strategic control hub,
institutional liaison
center



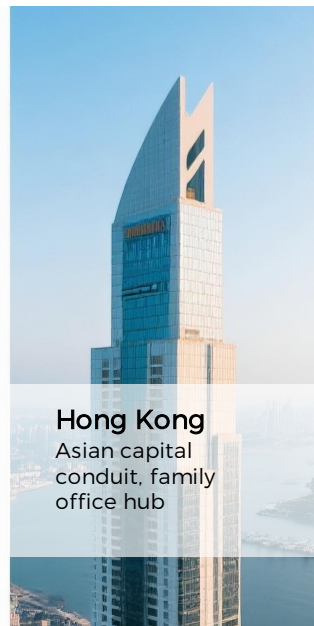
San Francisco / Toronto

Core regions for
technological R&D and
model iteration, housing
data teams and model
experimentation units



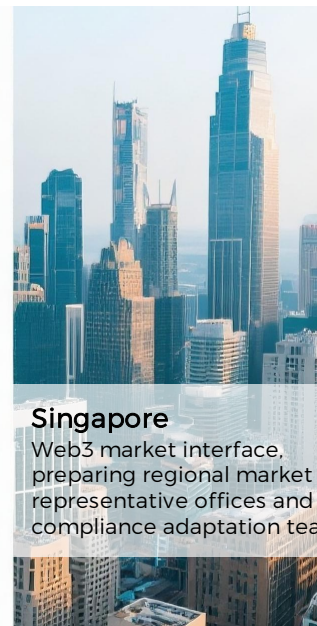
Dubai

Registration hub for
Middle Eastern funds,
international FOF
gateway



Hong Kong

Asian capital
conduit, family
office hub



Singapore

Web3 market interface,
preparing regional market
representative offices and
compliance adaptation tea



Roadmap

Phase 1: System Validation Period

2024 Q4 – 2025 Q2

- Complete closed-beta testing of the Alpha version of the AI strategy engine
- Initiate simulated internal fund operations using proprietary capital
- Conduct stability validation of multi-market, multi-asset class strategies
- Launch 2 flagship fund products

Phase 3: Global Expansion Period

Starting 2026

- Roll out Tiger AI's multi-fund product suite (covering bonds, equities, crypto, etc.)
- Secure deployment partnerships with 5+ major institutions (PBs, FOFs, platforms, etc.)
- Surpass \$500 million in assets under management (AUM)
- Launch a secondary AI strategy marketplace to enable system self-sustaining revenue
- Initiate Nasdaq listing preparations



Tiger AI

The world's most profitable tiger

Phase 2: Market Pilot Period

2025 Q3 – 2025 Q4

- Establish market representative offices in Hong Kong and Singapore
- Open API white-label access for selected strategy modules
- Launch the first round of private placements for Tiger AI's master fund
- Finalize localized compliance frameworks and initiate parallel regional pilots

Phase 4: Nasdaq Listing Completion

2026–2028

- Complete Nasdaq main board listing
- Offer global subscription access via a ChatGPT-style subscription model
- Become a global leader in AI-native asset management infrastructure
- Establish deep custody and distribution channels with major global fund structure providers
- Serve as an infrastructure-level option for institutions building intelligent asset allocation systems

Manifesto: AI Is Not a Tool—It Is the Next- Generation Fund Manager

Tiger AI is not merely a fund product—it is an intelligent asset organism that actively learns, autonomously executes, and self-proliferates.

It inherits the predatory instincts of Tiger Fund but operates with an AI neural network that never sleeps. While humans debate market trends, Tiger AI has already reallocated assets.

While traditional funds await committee decisions, Tiger AI is already architecting the next compounding engine.

